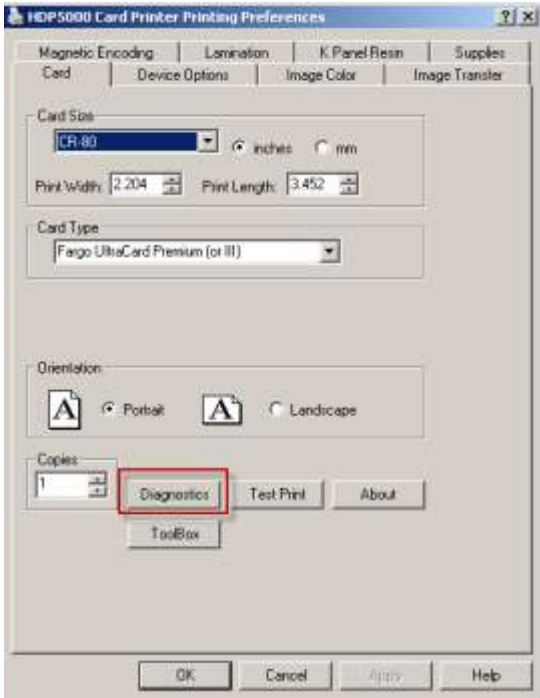
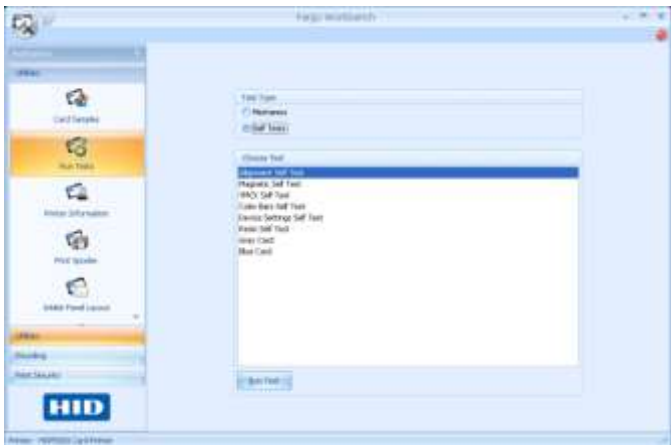


# How to properly set the IMAGE POSITION on the HDP5000/HDPii after upgrading the Printer Firmware to 4.1.4 or greater

Step	Procedure
1	<p>Open the Fargo Workbench Diagnostic Tool from within the Printer Driver.</p>  <p>Or from Programs open the FARGO folder to Fargo Workbench Printer Utility Program</p>
2	<p>Choose Run Tests from within the Workbench and select the ALIGNMENT SELF TEST or the Alignment Self Test from within the LCD menu of the printer.</p> <p>Use this same test for adjusting the Transfer Top of Form, and Transfer End of Form.</p> 

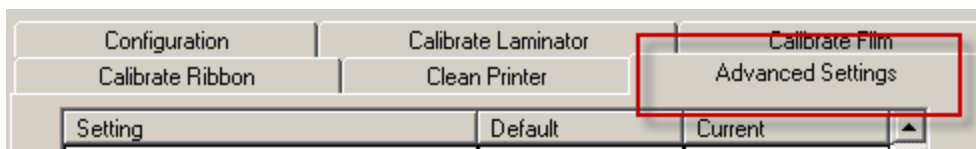
3	<b>ADJUSTING THE TRANSFER TOF (Top of Form)</b>
4	<p>Adjust the Transfer TOF (Top of Form) until the grid shows zero. See image below.</p> <div data-bbox="305 359 1414 890"> </div> <p><b><u>NOTE: Skip to Step 8 if TOF is aligned properly</u></b></p> <p>If the TOF is not centered properly use the Advanced Settings tab for making the appropriate adjustment.</p>
5	<p>Open the TOOLBOX from the Printer Driver under Printing Preferences.</p> <div data-bbox="347 1106 704 1568"> </div> <p>Use the <b>Advanced Settings</b> tab for adjusting the internal Printer settings, which are customized for every Printer at the factory and saved directly within the Printer's memory. (<b>Note:</b> You can select the Restore Defaults to restore the internal default settings)</p> <div data-bbox="298 1736 1089 1883"> </div>

6

## Working with the Advanced Settings tab

These change values for Firmware settings. See below.

- **Setting Column:** Displays label for setting
- **Default Column:** Displays default value for setting
- **Current Column:** Displays current value for setting
- To change the current value click on the CURRENT COLUMN field.
- **Apply Button:** Applies changed values.
- **Restore Defaults Button:** Restores default values.



7

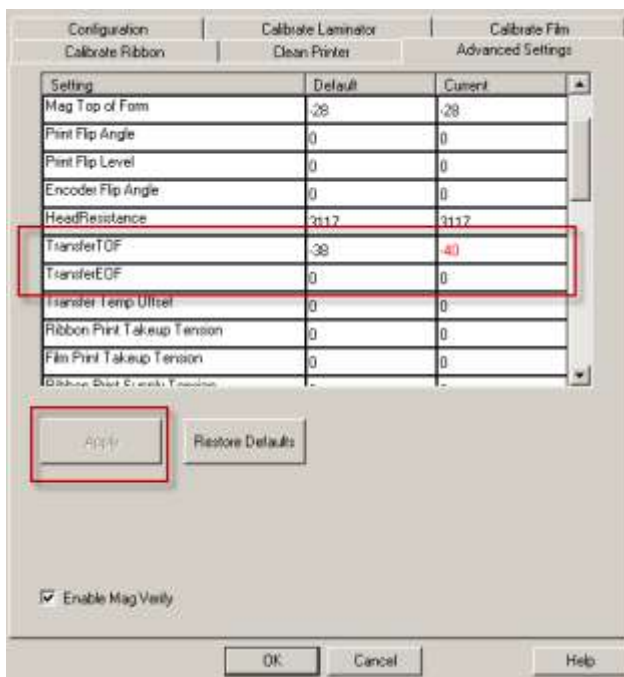
Adjust the Transfer TOF (Top of Form) under the CURRENT column.

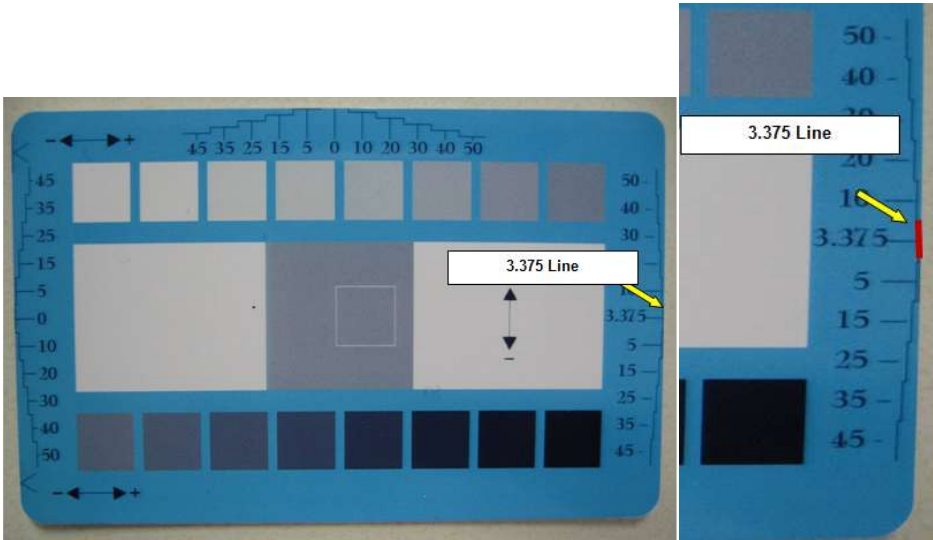
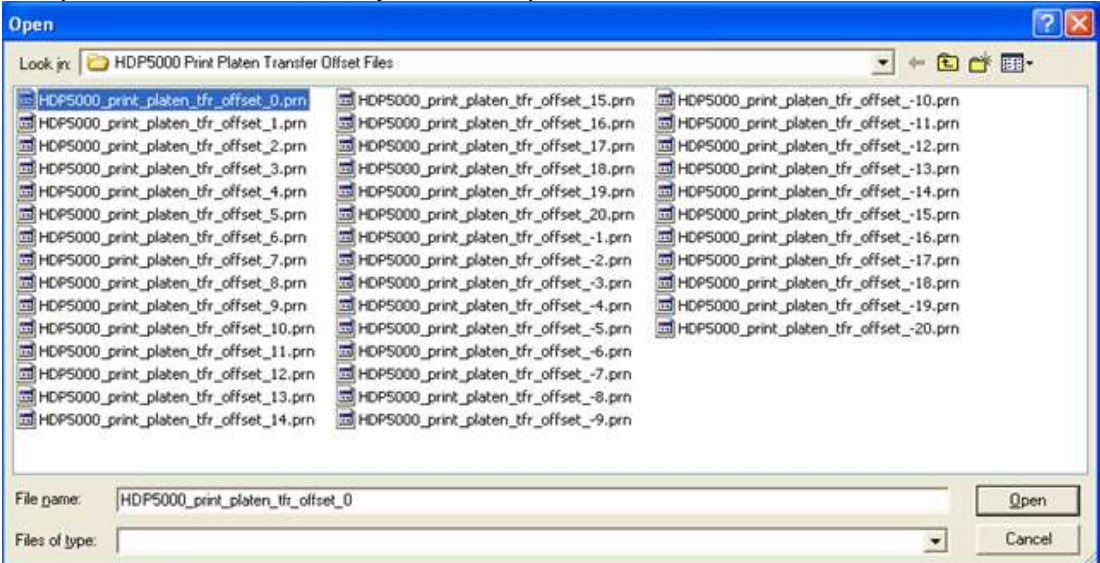
More NEGATIVE a number moves the image placement on the card to the LEFT.

More POSITIVE a number moves the image placement on the card to the RIGHT.

Adjust the Transfer TOF until the grid shows zero.

See picture in step 4.



8	<b>ADJUSTING THE TRANSFER EOF (END OF FORM )</b>
9	<p>Choose Run Tests from within the Workbench and select the ALIGNMENT SELF TEST or the Alignment Self Test from within the LCD menu of the printer.</p> <p>Verify the 3.375 grid line is at the trailing edge of the card as shown in the picture below.</p> <p><u><b><i>If the 3.375 grid line is set correctly no adjustment is needed and the setup is complete.</i></b></u></p> 
10	<p>If an adjustment is needed then a PRN file will need to be sent to the Printer.</p> <p>You will use the PRN files supplied in the READ ME zipped file.</p> <p>S000832_EOF_Adjust_PRNS_Rev_A.zip</p> <p>Unzip the folder and save to your desktop.</p> 

11

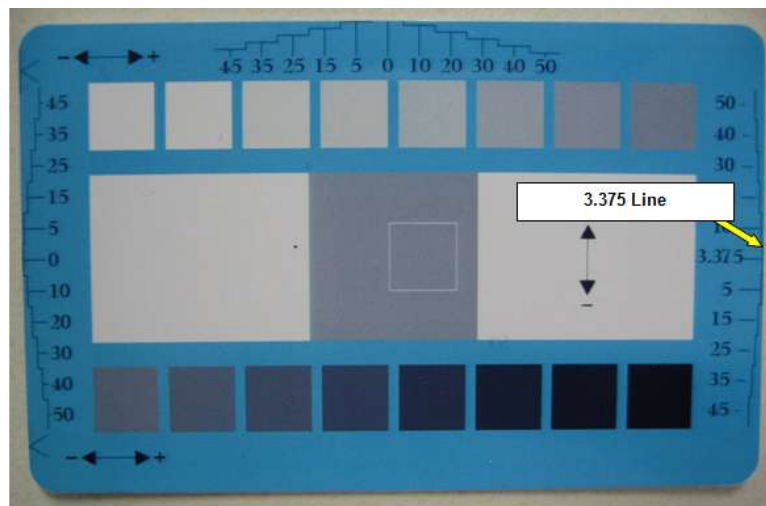
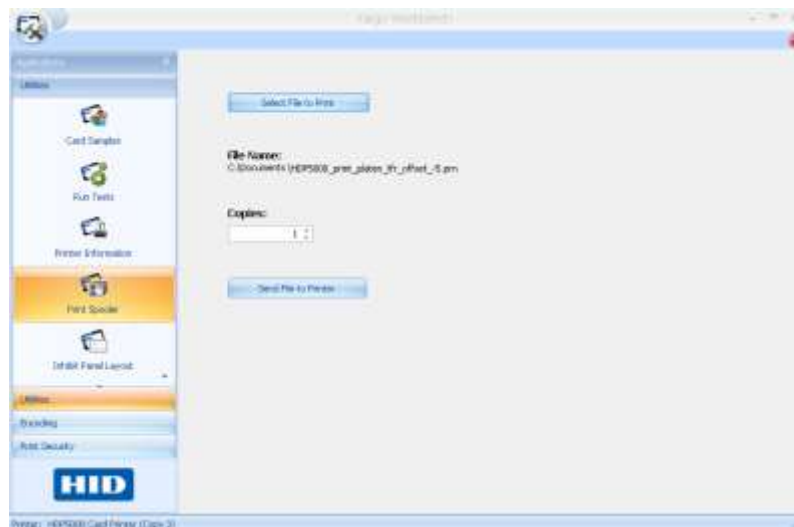
Setting the EOF positive (i.e. to a + number) will cause the image length to shorten.  
Setting the EOF negative (i.e. to a – number) will cause the image length to increase.  
If the line is SHORT (not to the end of the card) use a NEGATIVE PRN file.

Print the Alignment Self Test and compare to the image below.

Start with the **HDP5000\_print\_platen\_tfr\_offset\_-5.prn**

If the line is still SHORT use **HDP5000\_print\_platen\_tfr\_offset\_-10.prn**

After selecting the PRN file send to the Printer using the print spooler applet in the FARGO Workbench.



If the grid line is not set at 3.375 then use a PRN file in between -5 and -10 (or another appropriate PRN file) until the 3.375 line is exactly at the end of the card.

12

Procedure is now complete.