

# Swiftpro™

# K30/K30D Card Printer

300DPI ID card printer with single and dual sided options. Complies with all industry required security standards.

SECURITY

IMAGE QUALITY

DURABILITY

VERSATILITY



**FINANCIAL CARDS • LICENSES AND GOVERNMENT IDS  
EMPLOYEE IDS • SCHOOL/COLLEGE IDS**



Security Erase



UV Printing



## Security

- The **Security Erase** function (patented) prevents leakage of personal information on the ink ribbon. It scrambles information beyond recognition to protect this data.
- Dye-sublimation **UV printing** (256 gradations) also enhances ID card security. A UV printed face and any logo designs or text are exposed to UV light.
- For network security, the printer supports **IPSec** (IPv6 / IPv4). Encryption protects personal information on a network.

## Durability

- Dual InTM film protection INTM2
- Patch/Overlay layer security (clear/hologram)



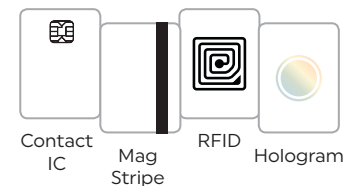
## Versatility

- Encoding functionality (magnetic, contact IC, RFID)
- Laminator connection (single/dual side)
- Various media substrates and security features available

### Substrates



### Features



K30/K30D Specifications	
Printing system	Dye sublimation re-transfer
Printing density	300dpi x 300dpi
Printable area	Edge to edge printing over the card surface
Print Speed (YMCK single printing)	27.5 sec / single side 55 sec / dual side (YMCK/K)
Cards	Thickness: 0.25mm ~ 1.00mm Size: 54.0mm * 85.6mm
Card Hopper	100cards (250cards hopper under development)
Interface	USB2.0 (Hi-speed / Full Speed) Ethernet (100BASE-TX / 10BASE-T)
Software environment (Driver and Tools)	Microsoft® Windows®10 32bit/64bit Microsoft® Windows®8 (including 8.1) 32bit/64bit Microsoft® Windows®7 (SP1) 32bit/64bit Microsoft® Windows® Server 2012 64Bit Microsoft® Windows® Server 2008 R2 (SP1) 64Bit
Operating environment conditions	Temperature: 15°C to 30°C Humidity: 35% to 70% (YMCK ink, No condensation)
Mass	approx. Single Side 13.5kg Dual Side 13.7kg
Dimensions	343mm * 335mm * 322mm (W*H*D) (without card stacker)
Consumables	YMCK Ink Ribbon: YMCK 1000 images/roll YMCKK Ink Ribbon: YMCKK 750 images/roll UV Ink Ribbon: YM CUv 750 images/roll Re-Transfer Film: 1000 images/roll Clear/Hologram Laminate Patch: 600 images/roll
Encoding Option	Magnetic (K30D only) Contact/contactless



**US**  
100 Randolph Rd.  
Somerset, NJ 08873  
☎ 732-271-7367  
✉ sales@swiftpro-printer.com

**EMEA**  
Oststrasse 34  
Dusseldorf, D-40211, Germany  
☎ 49-(0)211-3689-234  
✉ Sales\_EMEA@swiftpro-printer.com

**Asia**  
25<sup>th</sup> Floor, Thaniya Plaza Bldg, 52 Silom Rd.  
Suriyanwongse, Bangkok, 10500, Thailand  
☎ 66-(0)2-632-8077  
✉ Sales\_Asia@swiftpro-printer.com

**Swiftpro™**